

### CORIO CD-201F Refrigerated/Heating Circulator

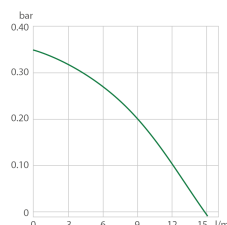
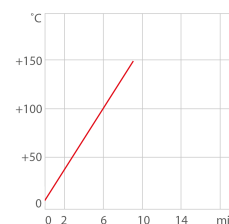
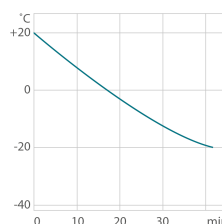
The new generation of laboratory circulators for routine work and standard tasks

Refrigerated / Heating Circulators of the new CORIO™ series distinguish themselves with a great price-to-performance ratio. They are ideal for all standard tasks and routine work in laboratories and industry.



#### Your advantages

- Models for internal and external applications
- Bright, white, easy to read display
- Very quiet
- Easy pump change-over (internal and external circulation)
- External pump connections (M16x1)
- USB connection
- Space-saving cooling coil design yields more usable space in the bath tank
- Bath lid and drain tap included
- Removable ventilation grid
- Refrigeration unit without side vents
- Class III (FL) according to DIN 12876-1



- Cool-down time (Ethanol)
- Heat-up time (thermal)
- Pump capacity (Water)

#### Technical Data

Order No.	9012702		
Model series	CORIO		
Category	Refrigerated - Heating Circulators		
Working temperature range (°C)	-20 ... +150		
Temperature control	PID		
Temperature stability (°C)	±0.03		
Setting / display resolution	0.1 °C		
Temperature Display	LED		
Heating capacity (kW)	2		
Cooling capacity (Medium Ethanol)	°C	20	0 -20
	kW	0.22	0.16 0.06
Pump capacity flow rate (l/min)	15		
Pump capacity flow pressure (bar)	0.35		
Bath opening / bath depth (W x L / D cm)	13 x 15 / 15		
Pump connections	M16x1		
Barbed fittings diameter (inner dia. / mm)	8 / 12		
Filling volume liters	3 ... 4		
Refrigerant	R134a		
Ambient temperature	5...40 °C		

Dimensions W x L x H (cm)	44 x 41 x 44
Weight (kg)	25
Included with each unit	2 each barbed fitting for tubing 8 and 12 mm inner dia. (pump connections M16x1 male)
Bath tank	Stainless steel
Bath cover	integrated
Cooling of compressor	Air
Available voltage versions	230 V / 50 Hz 208 V - 230 V / 60 Hz 115 V / 60 Hz 100 V / 50-60 Hz

### Characteristics



**100% Checked.**

100% testing. 100% quality. Each CORIO™ undergoes thorough quality testing before leaving the factory.



**More bath.**

Designed for more comfort. Thanks to the recessed cooling coil, the internal bath provides more space.



**ATC.**

Absolute Temperature Calibration, 1-point calibration (CD).



**No sweat.**

CORIO™ works robust and reliable – even at ambient temperatures of up to +40 °C.



**Brilliant.**

Bright display with strong illumination can be viewed easily from a long distance.



**Quick start.**

Individual JULABO consultation and comprehensive manuals at your disposal.



**Cleaning. Easy.**

Not only do the new units look good. The functional design makes cleaning a breeze.



**Safety.**

CORIO™ CD complies with Class III (FL) according to DIN 12876-1 and switches off automatically in case of high temperature or low liquid level alarm.



**Click.**

One for all. Control the circulator and the refrigeration unit with only one power switch.



**Satisfied customers.**

11 subsidiaries and more than 100 partners worldwide guarantee fast and qualified JULABO support.



**Condensation protection.**

Superb design solution. Integrated ventilation directs air over the bath lid and minimizes condensation.



**Saves energy.**

As you desire. Various modes for the refrigeration unit: permanently on, permanently off, or on as refrigeration is needed.



### Connection. Easy.

Inclined pump connections (M16x1) facilitate the connection of applications. Each unit includes 2 barbed fittings of 8/12 mm diameter each.



### Services 24/7.

Around the clock availability. You can find suitable accessories, data sheets, manuals, case studies, and more at [www.julabo.com](http://www.julabo.com).



### Everything at the front.

All operating controls and safety functions are accessed easily and comfortably from the front.



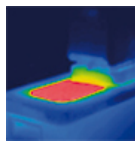
### Soft. Quiet.

CORIO™ circulators are cushion mounted. Protects the electronics. Reduces operating noise and vibration.



### Exact.

You can rely on it. PID1 control and 'Active Cooling Control' make the new CORIO™ precise and perfect.



### Solid.

Minimized energy loss through high-quality insulation.



### Green technology.

Development consistently applied environmentally friendly materials and technologies.



### Space saving. Free up space.

Place your CORIO™ right next to an application, another unit, or wall. That saves space. This is made possible by eliminating vents and connections on the sides.



### Handle with ease.

Makes day-to-day work easy. Comfortably move your CORIO™ around by using the ergonomic handles (front and rear).



### Stable.

Rubber feet allow for a secured footing of your CORIO™ to prevent damage to your laboratory equipment.



### Internal. External.

The pump is controlled via a lever located directly below the display. Easily change between internal and external circulation.



### Switch on. And off you go.

Intelligent operating concept. Ready for operation with just a few quick and easy steps.



### JULABO. Quality.

Highest standards of quality for a long product life.



### Tidy.

The special drain tap for easy draining of bath fluids without tools.



### Locked in.

The lockable power plug guarantees safe connection. More process safety.



### Touching permitted.

Optimum safety. The ergonomic plastic handle protects your fingers from hot surfaces.



**Maintenance. Friendly.**

The front magnetic grid can be removed easily for user-friendly cleaning and maintenance. Without tools.



**Unique.**

Specially designed pyramids ensure that the condensed liquid drips directly back into the bath.



**Mobile.**

Extra easy handling. Integrated castors for easy repositioning of refrigerated circulators. (CD-600F, CD-601F, CD-900F, CD-1000F, CD-1001F)



**USB.**

Remote control made easy. CORIO™ CD circulators feature a USB connection.