

## CORIO CD-BC12 Heating circulator

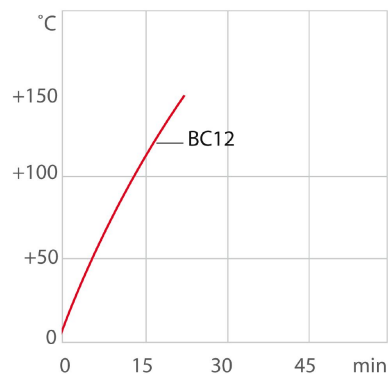
for internal and external temperature applications with stainless steel bath tanks and working temperatures from +20 °C to +150 °C

### Product features

- Models for internal and external applications
- Bright, white, easy to read display
- Very quiet
- Easy switching between internal and external circulation
- USB connection
- High-quality bath tanks made of stainless steel with bath lid and drain tap
- External pump connections
- Integrated cooling coil for counter-cooling
- For internal and external applications
- Easy pump change-over between internal and external circulation
- Precise temperature control



### Heat-up time



Medium: Thermal

### Performance values

230V/50Hz (Schuko Plug - CEE 7/4 Plug Type F)	
Heating capacity kW	2
Viscosity max. cSt	50
Pump capacity flow rate l/min	15
Pump capacity flow pressure bar	0.35
Power A	10

### Technical data

Available voltage versions		Bath	
Order No.	9 012 512	Bath tank	Stainless steel

Available voltage versions:		Bath cover	integrated
9012512.01	100V/50-60Hz (Nema N5-15 Plug)	Usable bath opening cm (W x L / D)	22 x 15 / 20
9012512.02	115V/60Hz (Nema N5-15 Plug)		
9012512.03	230V/50Hz (Schuko Plug - CEE 7/4 Plug Type F)		
9012512.03.chn	230V/50Hz (CN Plug)		
9012512.04	230V/50Hz (UK Plug Type BS1363A)		
9012512.05	230V/50Hz (CH Plug Type SEV 1011)		
9012512.13	230V/60Hz (Schuko Plug - CEE 7/4 Plug Type F)		

### Cooling

Cooling coil	integrated
--------------	------------

### Other

Classification	Classification III (FL)
IP Code	IP 21
Pump function	Pressure Pump
Pump type	Immersion Pump

### Electronics

Interfaces	USB
Temperature control	PID1
Absolute temperature calibration	1 Point Calibration
Temperature display	LED
Temperature setting	Keypad

### Dimensions and volumes

Weight kg	12.2
Barbed fittings inner diameter	8/12 mm
Dimensions cm (W x L x H)	33 x 49 x 47
Filling volume l	8.5 ... 12
Pump connections	M16x1 male

### Temperature values

Setting the resolution of the temperature display °C	0.1
Working temperature range °C	+20 ... +150
Temperature stability °C	±0.03
Ambient temperature °C	+5 ... +40
Temperature display resolution °C	0.01 ... 0.1

### Included in delivery

2 Barbed fittings for tubing 8 and 12 mm ID. (Pump connections M16x1 male)

For applications near or below ambient temperature: use a cooling coil or JULABO immersion cooler.

## All Benefits



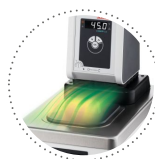
**100% Checked.**  
100% testing. 100% quality. Each JULABO Circulator undergoes thorough quality testing before leaving the factory.



**ATC.**  
Absolute Temperature Calibration, 1-point calibration (CD).



**Handle with ease.**  
Makes day-to-day work easy. Comfortably move your JULABO Circulator around by using the ergonomic handles (front and rear).



**Condensation protection.**  
Superb design solution. Integrated ventilation directs air over the bath lid and minimizes condensation.



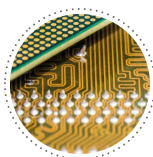
**Green technology.**  
Development consistently applied environmentally friendly materials and technologies.



**Internal. External.**  
The pump is controlled via a lever located directly below the display. Easily change between internal and external circulation.



**JULABO. Quality.**  
Highest standards of quality for a long product life.



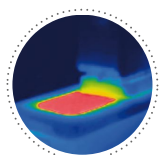
**Modern. Reliable.**  
High-grade components in every JULABO Circulator – platinum sensors, proven motor technology, CAN-Bus communication and much more.



**Satisfied customers.**  
11 subsidiaries and more than 100 partners worldwide guarantee fast and qualified JULABO support.



**Services 24/7.**  
Around the clock availability. You can find suitable accessories, data sheets, manuals, case studies, and more at [www.julabo.com](http://www.julabo.com).



**Solid.**  
Minimized energy loss through high-quality insulation.



**Stable.**  
Rubber feet allow for a secured footing of your CORIO to prevent damage to your laboratory equipment.



**Tidy.**  
The special drain tap for easy draining of bath fluids without tools.



**Touching permitted.**  
Optimum safety. The ergonomic plastic handle protects your fingers from hot surfaces.



**Quick start.**  
Individual JULABO consultation and comprehensive manuals at your disposal.



**Timer. Integrated.**  
CORIO circulators include an integrated timer function. When the set time has elapsed, a signal sounds and the device switches off. Setting range: 0 ... 999 minutes.



**Brilliant.**  
Very bright display makes it easy to read even from a distance.



**Connection. Easy.**  
Inclined pump connections (M16×1) facilitate the connection of applications. Each unit includes 2 barbed fittings of 8/12 mm diameter each.



**Everything at the front.**  
All operating controls and safety functions are accessed easily and comfortably from the front.



**Exact.**  
You can rely on it. PID1 control and 'Active Cooling Control' make the new CORIO precise and perfect.



**Locked in.**  
The lockable power plug guarantees safe connection. More process safety.



**Switch on. And off you go.**  
Intelligent operating concept. Ready for operation with just a few quick and easy steps.



**Early warning system for low liquid level**  
Maximum safety for applications, optical and audible alarm, allows user to refill bath fluid before the unit shuts down



**Connectivity.**  
Remote control made easy. CORIO CD circulators feature a USB connection.