

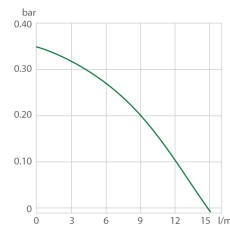
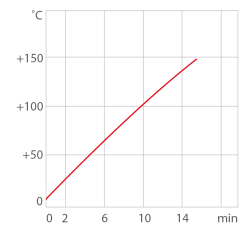
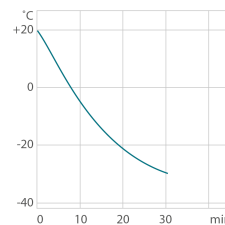
## CORIO CD-600F Refrigerated/Heating Circulator

The new generation of laboratory circulators for routine work and standard tasks

Refrigerated / Heating Circulators of the new CORIO™ series distinguish themselves with a great price-to-performance ratio. They are ideal for all standard tasks and routine work in laboratories and industry.

### Your advantages

- Models for internal and external applications
- Bright, white, easy to read display
- Very quiet
- Easy pump change-over (internal and external circulation)
- External pump connections (M16x1)
- USB connection
- Space-saving cooling coil design yields more usable space in the bath tank
- Bath lid and drain tap included
- Removable ventilation grid
- Refrigeration unit without side vents
- Class III (FL) according to DIN 12876-1



- Cool-down time (Ethanol)
- Heat-up time (thermal)
- Pump capacity (Water)

### Technical Data

Order No.	9012704					
Model series	CORIO					
Category	Refrigerated - Heating Circulators					
Working temperature range (°C)	-35 ... +150					
Temperature control	PID					
Temperature stability (°C)	±0.03					
Setting / display resolution	0.1 °C					
Temperature Display	LED					
Heating capacity (kW)	2					
Cooling capacity (Medium Ethanol)	°C	20	0	-10	-20	-30
	kW	0.6	0.53	0.35	0.22	0.1
Pump capacity flow rate (l/min)	15					
Pump capacity flow pressure (bar)	0.35					
Bath opening / bath depth (W x L / D cm)	22 x 15 / 15					

Pump connections	M16x1
Barbed fittings diameter (inner dia. / mm)	8 / 12
Filling volume liters	5 ... 7.5
Refrigerant	R404A
Ambient temperature	5...40 °C
Dimensions W x L x H (cm)	33 x 47 x 69
Weight (kg)	36
Included with each unit	2 each barbed fitting for tubing 8 and 12 mm inner dia. (pump connections M16x1 male)
Bath tank	Stainless steel
Bath cover	integrated
Cooling of compressor	Air
Available voltage versions	230 V / 50 Hz 208 V - 230 V / 60 Hz 115 V / 60 Hz 100 V / 50-60 Hz

## Characteristics



**100% Checked.**  
100% testing. 100% quality. Each CORIO™ undergoes thorough quality testing before leaving the factory.



**More bath.**  
Designed for more comfort. Thanks to the recessed cooling coil, the internal bath provides more space.



**ATC.**  
Absolute Temperature Calibration, 1-point calibration (CD).



**No sweat.**  
CORIO™ works robust and reliable – even at ambient temperatures of up to +40 °C.



**Brilliant.**  
Bright display with strong illumination can be viewed easily from a long distance.



**Quick start.**  
Individual JULABO consultation and comprehensive manuals at your disposal.



**Cleaning. Easy.**  
Not only do the new units look good. The functional design makes cleaning a breeze.



**Safety.**  
CORIO™ CD complies with Class III (FL) according to DIN 12876-1 and switches off automatically in case of high temperature or low liquid level alarm.



**Click.**  
One for all. Control the circulator and the refrigeration unit with only one power switch.



**Satisfied customers.**  
11 subsidiaries and more than 100 partners worldwide guarantee fast and qualified JULABO support.



### Condensation protection.

Superb design solution. Integrated ventilation directs air over the bath lid and minimizes condensation.



### Saves energy.

As you desire. Various modes for the refrigeration unit: permanently on, permanently off, or on as refrigeration is needed.



### Connection. Easy.

Inclined pump connections (M16x1) facilitate the connection of applications. Each unit includes 2 barbed fittings of 8/12 mm diameter each.



### Services 24/7.

Around the clock availability. You can find suitable accessories, data sheets, manuals, case studies, and more at [www.julabo.com](http://www.julabo.com).



### Everything at the front.

All operating controls and safety functions are accessed easily and comfortably from the front.



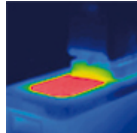
### Soft. Quiet.

CORIO™ circulators are cushion mounted. Protects the electronics. Reduces operating noise and vibration.



### Exact.

You can rely on it. PID1 control and 'Active Cooling Control' make the new CORIO™ precise and perfect.



### Solid.

Minimized energy loss through high-quality insulation.



### Green technology.

Development consistently applied environmentally friendly materials and technologies.



### Space saving. Free up space.

Place your CORIO™ right next to an application, another unit, or wall. That saves space. This is made possible by eliminating vents and connections on the sides.



### Handle with ease.

Makes day-to-day work easy. Comfortably move your CORIO™ around by using the ergonomic handles (front and rear).



### Stable.

Rubber feet allow for a secured footing of your CORIO™ to prevent damage to your laboratory equipment.



### Internal. External.

The pump is controlled via a lever located directly below the display. Easily change between internal and external circulation.



### Switch on. And off you go.

Intelligent operating concept. Ready for operation with just a few quick and easy steps.



### JULABO. Quality.

Highest standards of quality for a long product life.



### Tidy.

The special drain tap for easy draining of bath fluids without tools.



### Locked in.

The lockable power plug guarantees safe connection. More process safety.



### Touching permitted.

Optimum safety. The ergonomic plastic handle protects your fingers from hot surfaces.



### Maintenance. Friendly.

The front magnetic grid can be removed easily for user-friendly cleaning and maintenance. Without tools.



### Unique.

Specially designed pyramids ensure that the condensed liquid drips directly back into the bath.



### Mobile.

Extra easy handling. Integrated castors for easy repositioning of refrigerated circulators. (CD-600F, CD-601F, CD-900F, CD-1000F, CD-1001F)



### USB.

Remote control made easy. CORIO™ CD circulators feature a USB connection.